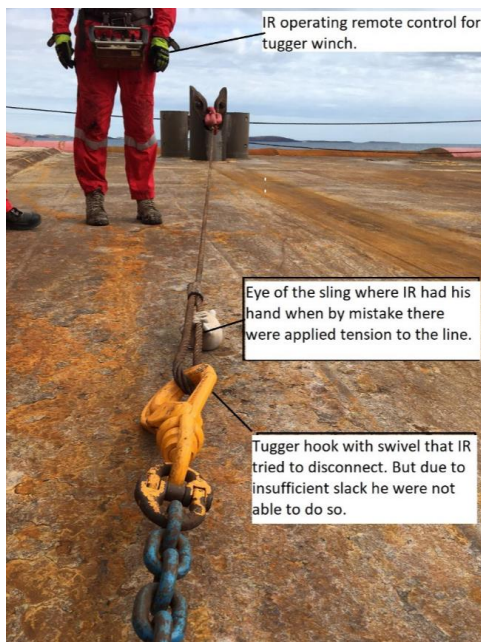


# Marine Safety Flash



A17-06 (17<sup>th</sup> July 2017)

## Back Deck Operations – disconnection of equipment



After receiving a PCP and securing the 76mm chain tail in the shark jaw. A crewmember was disconnecting the sling, which was passed down with the PCP.

The crew members hand was holding onto the eye of the sling and attempting to disconnect the tugger hook. There has been unexpected tension on the line and the crewmember's finger has been crushed causing a fracture. This event has the potential in any lifting operation. Situational awareness, due care, clear communication and diligence must always be applied.

### EARLY LEARNINGS

While investigation of root cause remains underway, the following learnings may be applied:

- Consider your grip when disconnecting and connecting hooks;
- Maintain clear communications between machine operators and personnel performing manual handling. Do not become task focused, remember to look up and around;
- Always communicate with others when putting on or relieving tension on a line;
- Always keep yourself out of the line of fire;
- Maintain situational awareness when using machinery;
- Always ensure all safe guards are in place when tensioning loads;
- If you are unsure stop work and seek assistance.