

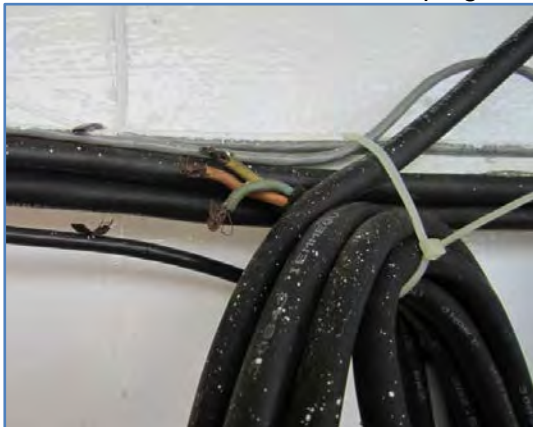
Safety Flash A12-15



Issued: 15th November 2012
Subject: Electrical Shock Incident

Incident

During the vessel mobilisation activities, a sub-contractor had been given the task of running a coaxial cable on the mezzanine deck. During the course of this job, the pliers being used to trim the loose ends of the cable ties touched the exposed live ends of a 220V cable and received an electric shock. This cable had been left from a previous project, and the outlet is the type that does not allow to be switched on unless the plug is inserted.



On the left are the exposed wires ends that were contacted, and on the right is the plug and outlet.

The sub-contractor was sent to the local clinic for a medical check-up and fortunately was able to return to work without treatment.

Root Cause

The cable was not left in a SAFE CONDITION with an Isolation Certificate in place.

There had been no inspection of the vessel on completion of the previous project, which would ensure that the vessel was being left in a safe condition.

Lessons Learnt

- Consider management of change between projects.
- Ensure you turn off electrical switches if not in use and encourage this culture in your workforce.
- Consider risk assessments (from IMCA M 217):
 - **L**ocate all points of isolation
 - **I**solate to prevent accidental re-energising
 - **V**erify power is disconnected and there are no secondary power sources
 - **E**arth using appropriate approved equipment

References

AS/NZS 3000 – Wiring Rules

IMCA SEL 031 / IMCA M 217 – Offshore Vessel-High Voltage Safety