

# Marine Safety Flash

## A13-01 (15<sup>th</sup> February)

### Cut Finger on Electrical Binding



#### Incident Overview

While running data cables in a tight location behind an existing electrical cabinet, the IP cut left middle finger on a stainless steel cable tie. Class rules require metal bindings to be located at certain intervals along electrical conduit. These can consist of 'band-it' strapping with buckle terminations.

Medical treatment provided on-board with Ship Captain inserting two medical staples to close wound.

#### Key Findings

- The termination of the steel strapping had been left with exposed sharp edges.
- The inherent cut hazard of these bindings had not been identified prior to commencing this task.
- As a result, no hand PPE was employed.

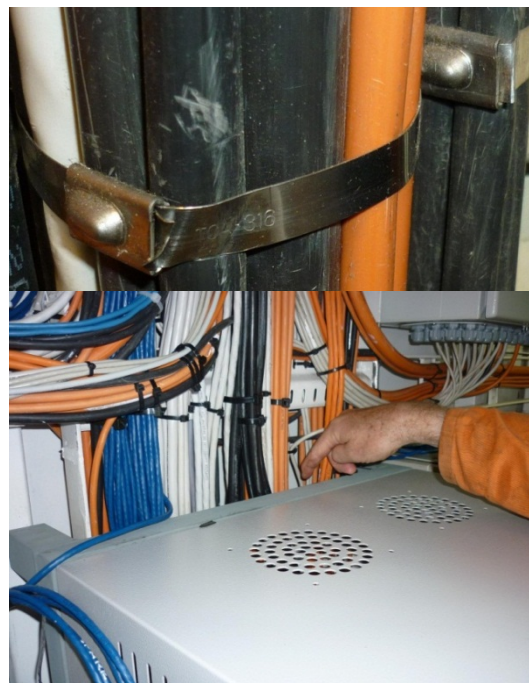


Figure 1 & 2: Steel strapping and area where incident occurred.

#### Recommendations

- (1) Every task will carry a degree of risk.
- (2) Prior to any task, the work scope is to be subject to a form of risk assessment to ensure controls can be put in place to minimise the likelihood of an incident. JHA for this task to be reviewed and updated.
- (3) Appropriate PPE should be worn depending on the outcomes of risk assessment.
- (4) Inherent hazard presented by stainless cable ties to be recorded in inherent hazard log and included in crew induction.
- (5) Control method for this risk is use of on-board PPE and crew are to be refresher trained on available gloves.
- (6) Feedback to be provided to vessel new build electrical superintendent regarding identification and elimination of this hazard for future vessels at new build stage.



Figure 3: Gloves with cut rating 5 which are ideal for this task.