

Marine Safety Flash

A15-05 (15th March)



Ship's stores crane block fell to dock

Incident Overview

Whilst bringing a ship's deck crane into position to load stores, the boom of the crane was extended causing the crane block to come into contact with the crane head sheave which placed excessive tension on the wire.

The result was the crane hoist wire rope parted and the block fell to the dock.

No personnel were in close proximity at the time of incident.

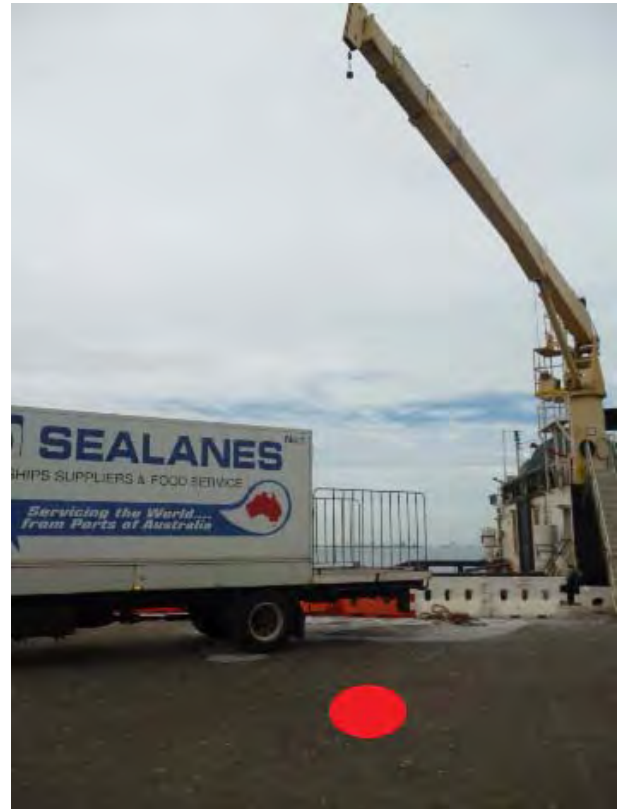
Key Findings

Immediate actions:

- Crane operations stopped immediately.
- Incident area secured and made safe.
- Incident reported.
- Investigation commenced.

Recommendations

- Have pre-start checks been completed?
- Are safety devices and systems operational?
- Is there opportunity for safety systems to be bypassed or overridden?
- Are operators trained, competent and authorised?
- Are personnel out of line of fire?



Location of dropped block



Crane block showing parted wire