

# Marine Safety Flash

## A15-22 (15<sup>th</sup> September)

### LSA Equipment Damage



#### Incident Overview

Vessel was conducting routine monthly emergency drill for RC launch and operations.

During slewing of davit outboard, the rescue craft (RC) came away from its davit cradle. The RC bow contacted a fixed handrail stanchion of the vessel. Then the RC swung back in and struck its stern against the cradle. The impact resulted in an 80mm scrape forward & two 40mm scrapes aft through the gelcoat and into the fibreglass on the RCs bottom.

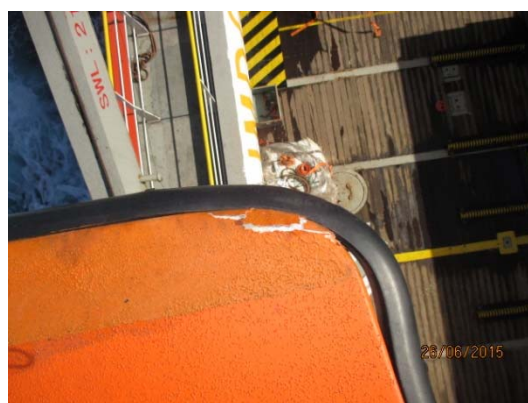
Coxswain attempting to manoeuvre the RC alongside backed the port corner of the boat into the ships side causing crushing of the top edge of the sponson.

#### Key Findings

- RC retrieved and secured on board.
- Incident reported to all concerned parties.
- Vessel conducted a Step Back 5x5.

#### Recommendations

- Review and / or revise Safe Operating Procedure (SOP) as well as JSA for Rescue Craft Operations – ALL associated risks to be identified and mitigation put in place in advance.
- Experienced crew member to command the RC during drills and on board training of other crew members.
- All crew members MUST strictly adhere to the on board SOP and JSA during drills and training.
- Deviation from Operating Procedures should be avoided at all times during on board operations and drills.
- Appropriate PPE MUST be worn during shipboard drills and training without fail.



Damage to the Rescue Craft