

Marine Safety Flash

A16-06 (5th February 2016)



Twisted knee injury from falling through floor plate

Incident Overview

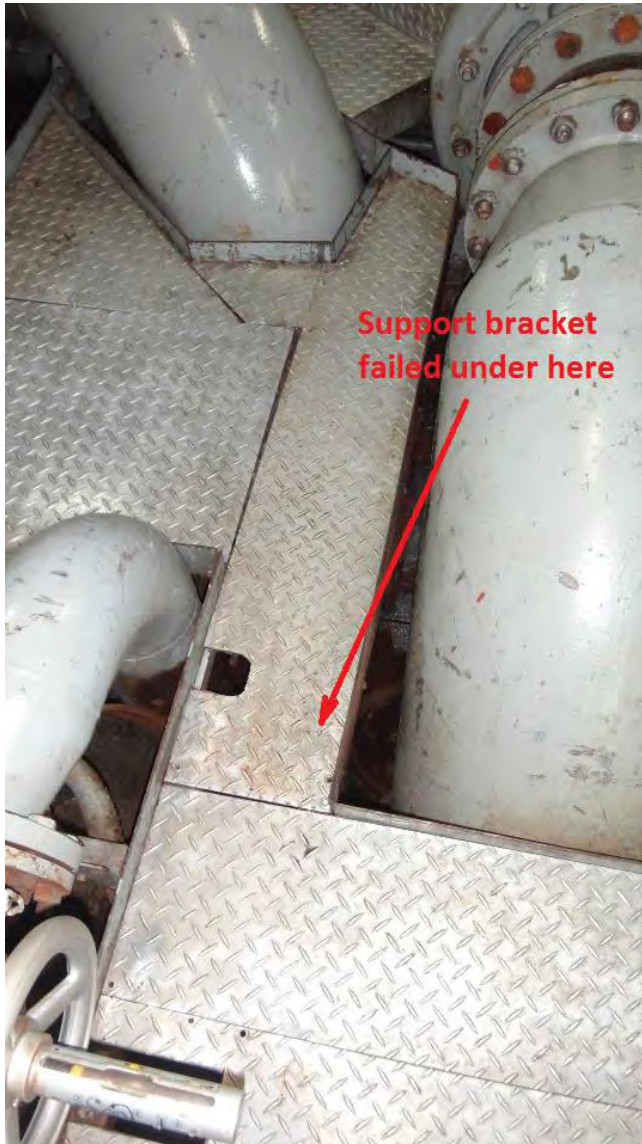
A crewmember was washing down deck plates in the Engine Room in preparation for handover, a routine task. While washing down the floor plates the crewmember was located adjacent to the starboard Fi-Fi pump. The floor support bolting mechanism gave way and the square section bar collapsed. The alloy checker plate that the crewmember was standing on fell through an open gap causing the crewmember to fall into the exposed opening. The crewmember twisted his right knee as a result of the fall.

Key Findings

- The on board investigation found that the structure was last removed during overhaul of FiFi pump 4 months prior to the incident.
- It was noted that the C-section steel of the support frame had aged and was opening up.
- The original design plate securing arrangement had aged.
- Vibration by location of #3 Main Engine may be a contributing factor to the relaxing of securing arrangements in this section.
- Due to the design of the T type connection and the location of the deck plate/structure, it was difficult to visually ascertain that the groove in the nut was sufficiently secured.

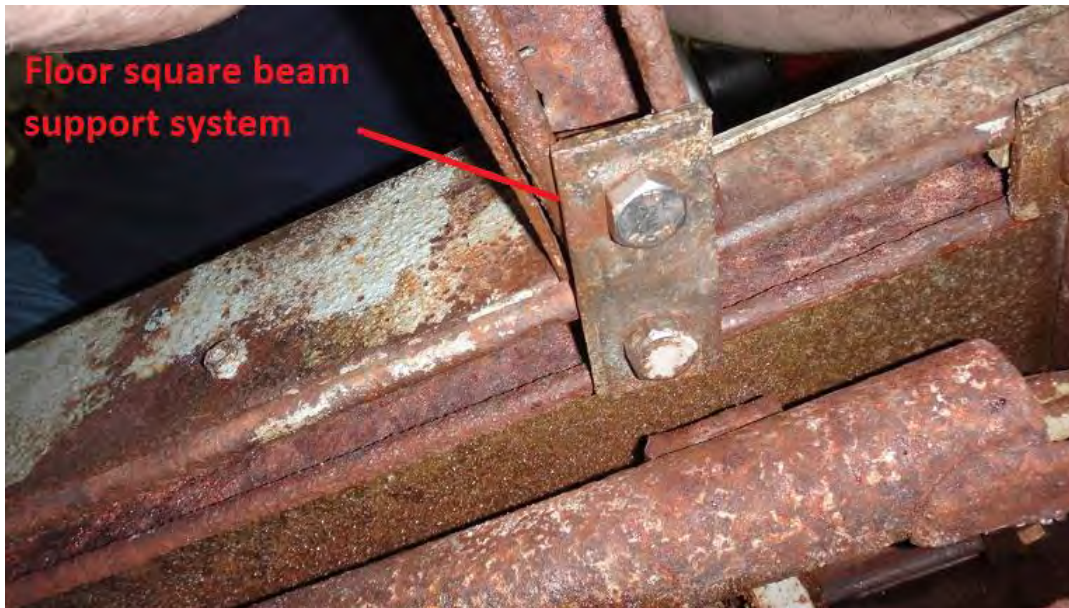
Marine Safety Flash

A16-06 (5th February 2016)



Marine Safety Flash

A16-06 (5th February 2016)



Recommendations

- Safety Officers and Safety Representative to discuss this incident with all crew at next Safety Meeting to reinforce the importance of housekeeping. In particular, ensure if structures or plates are removed for maintenance, sufficient re-securing is completed including the floor plate to the supporting structure.
- Engineering team to check all floor plating steelwork in the Engine Room to ensure C-sections are repaired or replaced as required. Where necessary, add new securing plate screws.
- Include in vessel induction and inherent hazard log that if soft foot and/or movement is encountered under foot on any floor plate or walk way, immediate investigation is to be undertaken.
- Include in the weekly hazard rounds to check for any potential soft foot and/or movement on any floor plate or walk way in the engine room.