

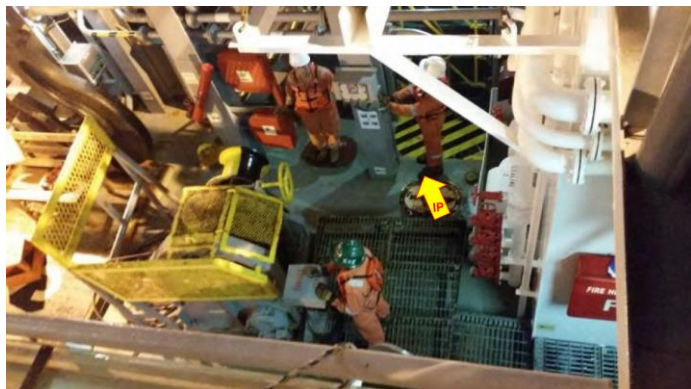
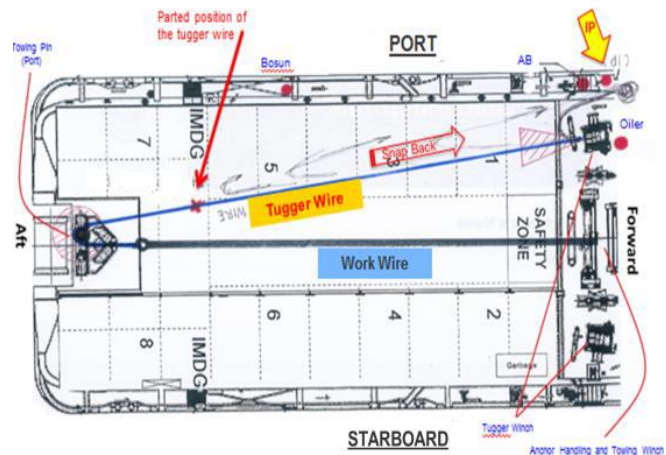
Marine Safety Flash



A16-15 Leg Injury during Anchor Emergency Release Testing

Incident Overview

A Marine Vessel was assigned to support a rig move operation. During testing of the winch Emergency Release System, the winch work wire was connected to a tugger wire and was pulled at tension by a tugger winch. When the Chief Engineer pressed the emergency release button from the bridge control, the work wire drum began heaving instead of paying out. This added more tension to the wire which caused the tugger wire to part and snap back, hitting the left leg of the IP who was standing behind a stairway close to the cargo crash rail. As a result, the IP experienced abrasions and minor swelling on his left leg above his left knee. After receiving first aid treatment and visiting the medic on the drilling rig, the IP returned to normal duty.



Key Findings

- No formal written procedure was in place for testing the winch emergency release mechanism.
- The Anchor Handling and Towing Operations Best Practices were not implemented on the vessel.
- A JSA for Emergency Release Testing was not conducted before commencing the task.
- Unclearly defined Snap back zone and clear deck policy. This allows some crews to stand in the line of fire while testing with wire in tension.

Recommendations

- Follow procedure for any High Risk task.
- Common practice is not always the Best Practice.
- Personnel must fully familiarize with the machinery operating characteristics specific to each vessel.
- Clear deck policy to be in place whenever "lines are under tension"