

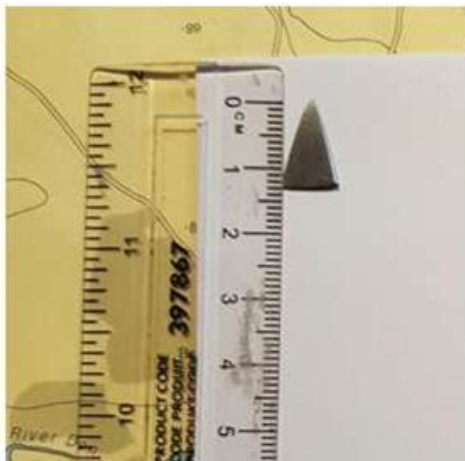
Marine Safety Flash

A16-20 (15th June)

Near Miss – Knife tip in prepared meal

Incident Overview

A crew member was sitting down to their evening meal and came across an object in his mouth. Crew Member removed the item from his mouth and put on the side of his plate and handed back to the cook on-board the vessel. Further inspection identified that the object was a blunt knife point, unbeknown to the cook; the knife point broke off whilst separating frozen fish.



Key Findings

- Incorrect selection of tool for the task.
- Pre / Post use inspections were not carried out in accordance with Guidance document.

Recommendations

- Risk Assessment to identify and include the correct tools for the task
- Risk Assessment to include pre / post use inspections to ensure work equipment is intact